

SEP RESEARCH HIGHLIGHTS

AI/Machine Learning

The amount of **data** available, **computing power** and **open-source** tools are the drivers of the new Artificial Intelligence (AI) revolution. We are seeing at breaking point for the development of core technologies that are revolutionizing industry-specific challenges. In the near future, Machine Learning will exponentially impact how companies automate processes, collect information and make decisions.

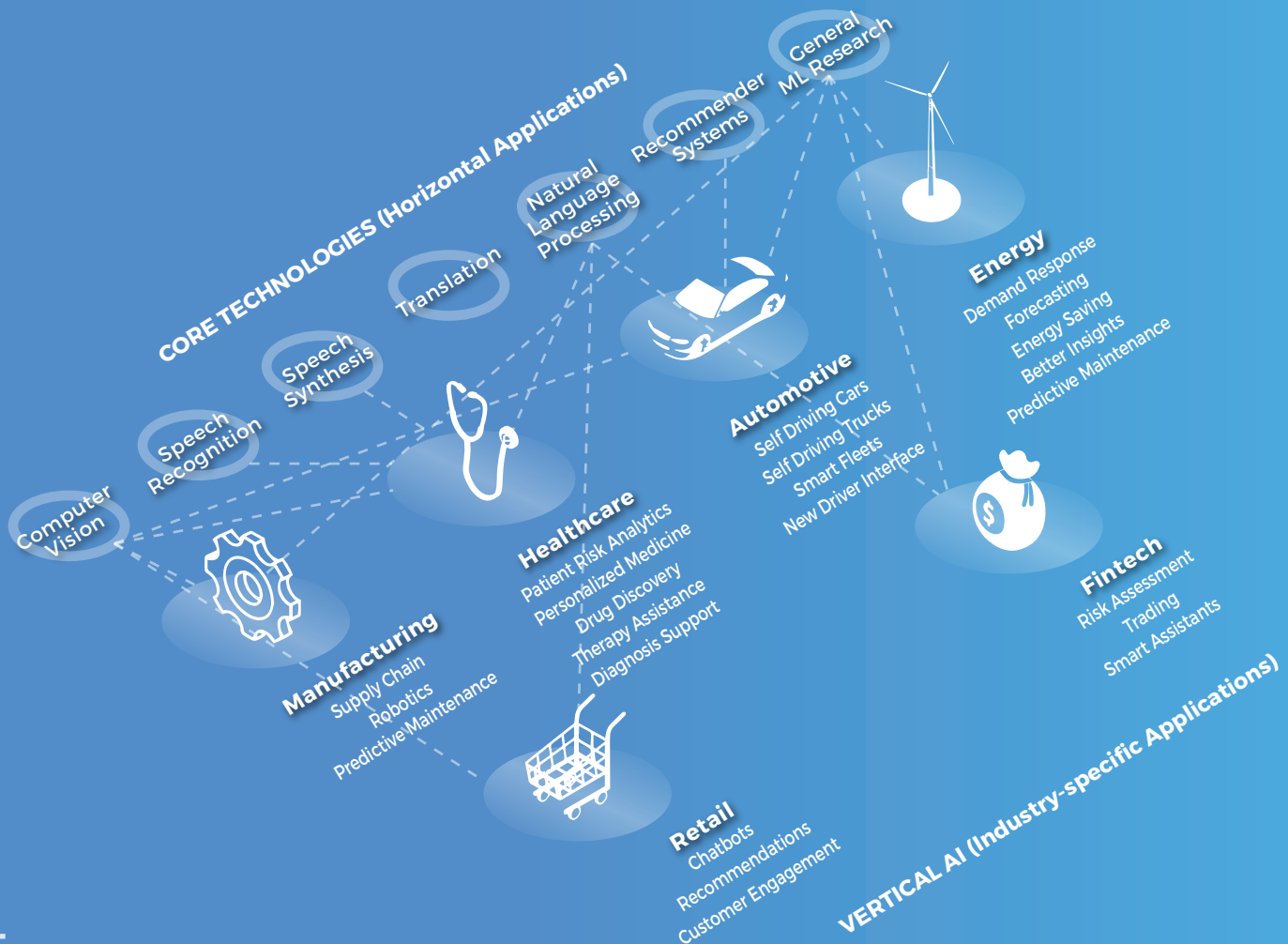


267 AI Scaleups in Europe*

\$0.7B Total Capital Raised*

AMOUNT OF CAPITAL RAISED PER GEOGRAPHY*

MAP OF APPLIED AI/MACHINE LEARNING



*Own elaboration based on public data by Crunchbase and other sources. Data updated at 12/31/2017

AI/MACHINE LEARNING KEY TRENDS



TECHNOLOGY

Horizontal applications: SaaS solutions from tech-giants are becoming available. Thanks to the massive datasets that GAFA own, they're capable of offering state-of-the-art AI applications on tasks like image recognition and translation.

AI-verticalization of services: companies like Google and Amazon are offering cloud services specifically designed for AI. In contrast with horizontal applications, vertical AI solves industry-specific problems. We're seeing a first start in this trend, with M&As outside from the traditional tech sector.



INDUSTRY

Automatization: AI technology will lead to an increasing automatization of work as more tasks no longer require human labor.

Decision-making: Increasing amounts of data available and the development of vertical-AI will give leaders in different industries more information to base strategic decisions on.

New industries: Although the application of AI technologies in some industries is already happening, AI-driven solutions will spread in new sectors as more horizontal technologies are developed.

SEP SCALEUPS ON WATCH



arago

Founded: 1995**Key-words:** Business Intelligence**Description**

Arago is an artificial intelligence company that helps businesses automate their IT processes through intelligent automation.

**Founded:** 2013**Key-words:** Advertising**Description**

Buzzoole provides an artificial intelligence technology applied to the Influencer Marketing world in order to create matches between brands and creators with the degree of affinity.

**Founded:** 2015**Key-words:** E-Commerce**Description**

Competitor is an advanced data platform that provides global information on pricing and competitive insight.

ELEMIZE
TECHNOLOGIES**Founded:** 2016**Key-words:** Cleantech**Description**

Elemize Technologies promotes the transition towards cleaner and fairer electricity systems, allowing customers to exploit all the benefits of distributed energy sources.

**Founded:** 2008**Key-words:** Cleantech**Description**

Eliq is an energy management company dedicated to improving the way consumers use energy in their everyday lives by using machine-learning analytics and IoT devices.

**Founded:** 2015**Key-words:** API**Description**

Hutoma provides deep learning APIs to train and deploy intelligent AI interfaces on connected devices.



INDIGO

Founded: 2016**Key-words:** Chatbots**Description**

Indigo is an artificial intelligence platform that uses chatbots and machine learning in order to let businesses automate customized experiences with their customers via chat.

**Founded:** 2013**Key-words:** Advisor Platform, Big Data**Description**

Innaas is an advanced AI-driven advisor platform providing relevant insights generated from internal and external data.



MOBERRIES

Founded: 2015**Key-words:** Recruiting**Description**

MoBerries is a shared talent platform connecting candidates and companies.



Mosaicoon

Founded: 2010**Key-words:** Video Sharing**Description**

Mosaicoon is a managed marketplace for selling and buying original video projects. Creators have the opportunity to express their talent and easily monetize their original videos.

**Founded:** 2014**Key-words:** Contract Management**Description**

Precisely is a cloud-based contract management platform where companies can save significant time and resources by creating, controlling, signing and monitoring contracts.



replex

Founded: 2016**Key-words:** Enterprise IT Infrastructure**Description**

Replex is an IT infrastructure visualization and optimization platform that brings together critical real-time information businesses need.

**Founded:** 2014**Key-words:** Predictive Analytics**Description**

Rulex's unique logic-based approach to predictive analytics enables business and process experts to rapidly create and deploy AI applications with no need for math or programming skills.

**Founded:** 2013**Key-words:** Marketing Communication**Description**

Synerise combines AI-enhanced customer intelligence with personalized omni channel communication at scale.

**Founded:** 2012**Key-words:** Reputation, Trust**Description**

Traity measures people's reputation based on their social media footprint, allowing people to trust each other online.

